

starting in the Senior School



Year 7 2024 Parent Information Evening





Year 7 2024

Parent Information Evening

Agenda

- 01** Peter Allen | Principal
- 02** Brad Tyrrell | Director of Technology
- 03** Julia McGibbon-Briggs | Deputy Principal
- 04** Keralee Radi | Director of Inclusive Education
- 05** Janine Finnie | Director of Sport
- 06** Matt Weston | Head of Boarding
- 07** Bruce Derby | Deputy Principal
- 08** Richie Longson | Head of Community Engagement



starting in the Senior School



Peter Allen

Principal



01



Brad Tyrrell

Director of Technology



02



Julia McGibbon-Briggs

Deputy Principal
Wellbeing & Student Experience



03



Guildford Grammar School
FOUNDED 1896



Our Year 7 and 8 approach

Our 'Why'

- Ease the transition into senior school
- Younger for longer
- Age and stage appropriate environment
- Improved ability to target student's emerging skills
 - Social Emotional and Wellbeing
 - Executive functioning
 - Ready to learn skills

How the **MIND** of a **MIDDLE SCHOOLER** works

Middle school students typically have an attention span of **10-12** minutes.

The brain growth that occurs between the ages of **10-15** is the 2nd greatest in human life.

Teens learn best through **interaction** and activity.

Adolescents misinterpret emotions and instructions up to **40%** of the time.

Middle schoolers retain **5-7** bits of information at a time.

Adolescents need **9+** hours of sleep per night to function best.

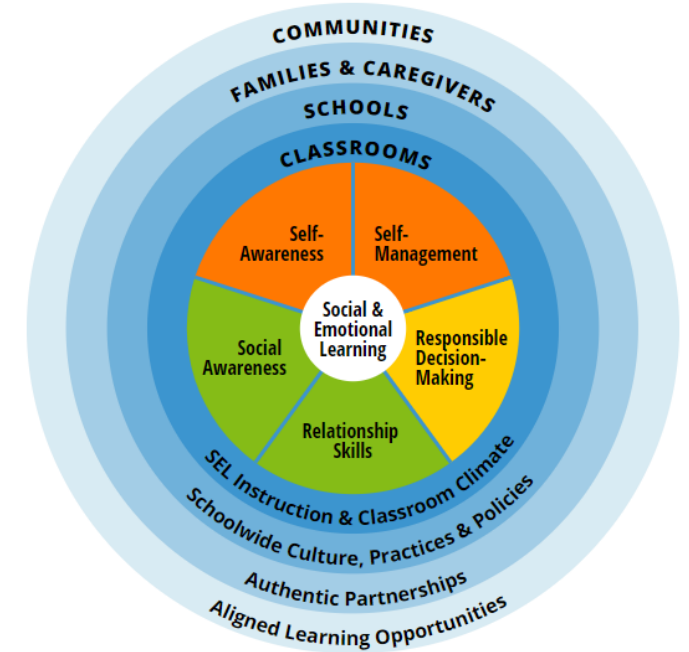




**Visible Wellbeing – Prof
Lea Waters**

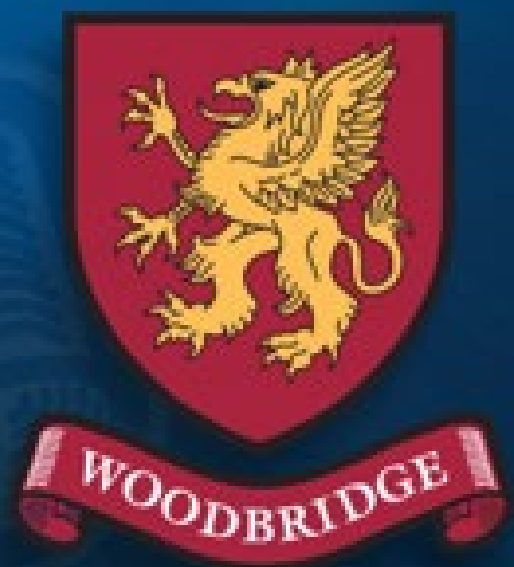


**PERMAH – Martin
Seligman**



**Collaboration for
Academic, Social and
Emotional Learning**

Some SEL frameworks we follow



How can parents support transition?

- Help them with getting organized for the day
- Weekly planners are great
- Quiet time to process the day
- Early nights – they will be exhausted
- Encourage your child to find solutions to the problems they may encounter – emailing teachers etc
- Have lots of food and hugs on tap
- Have clear family boundaries with technology, especially if the phone is a new addition to the family 😊



Key Dates and email addresses



SEPTEMBER

**Sat
16**

AAS Testing

November

**Wed
29**

Claire Eaton
“Hello High School”

November

**Sun
19**

**Boarders’
Orientation**

January

**Mon
29**

First day of Year 7

November

**Mon
20**

Step-Up Day



janine.finnie@ggs.wa.edu.au

brad.tyrrell@ggs.wa.edu.au



keralee.radi@ggs.wa.edu.au

julia.mcgibbon-briggs@ggs.wa.edu.au



Keralee Radi

Director of Inclusive
Education

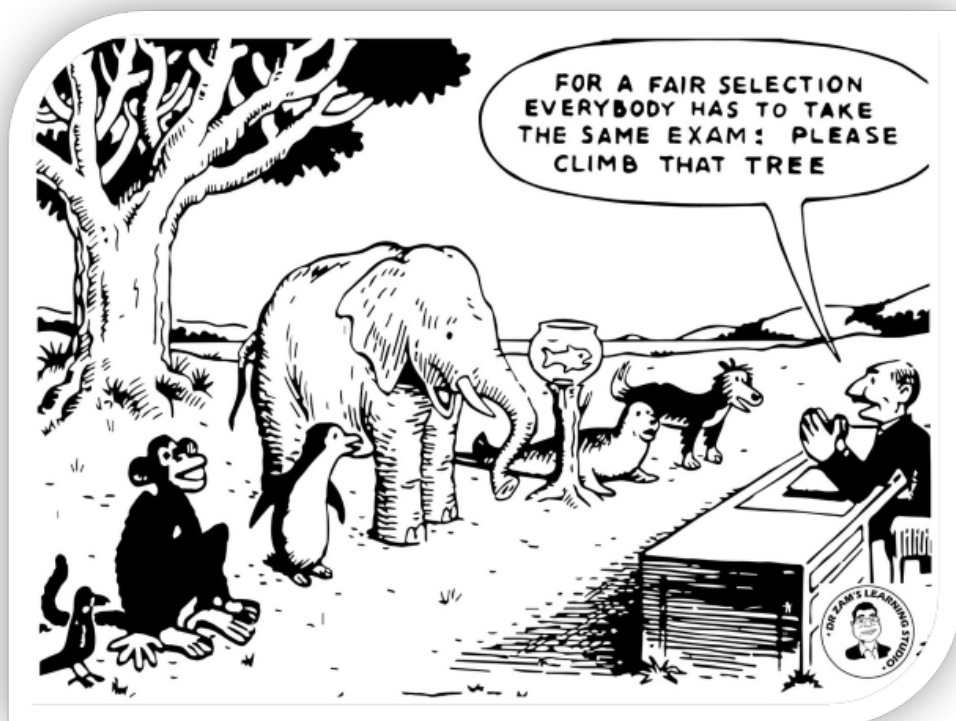


04

Fostering Connection



Inclusive Education



Celebrating student diversity

Universal Design for Learning
and Differentiation

Inclusive Education



Focus courses

Additional support available

Partnering in Documented
Plan development and review

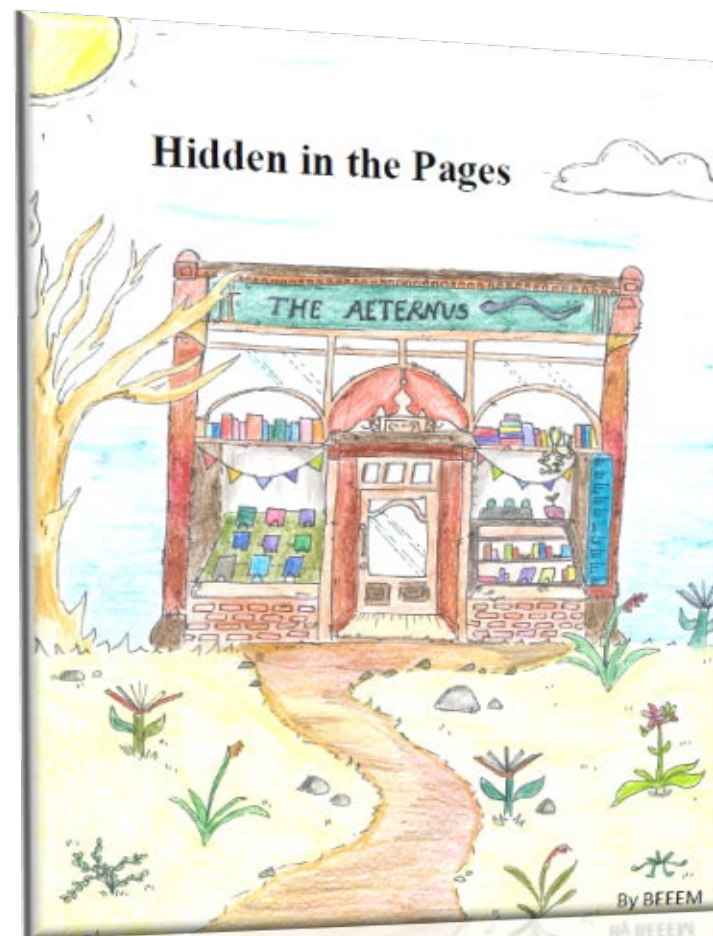


Inclusive Education



Challenging opportunities to
grow and discover talents

Development of Strength
Profiles



Inclusive Education

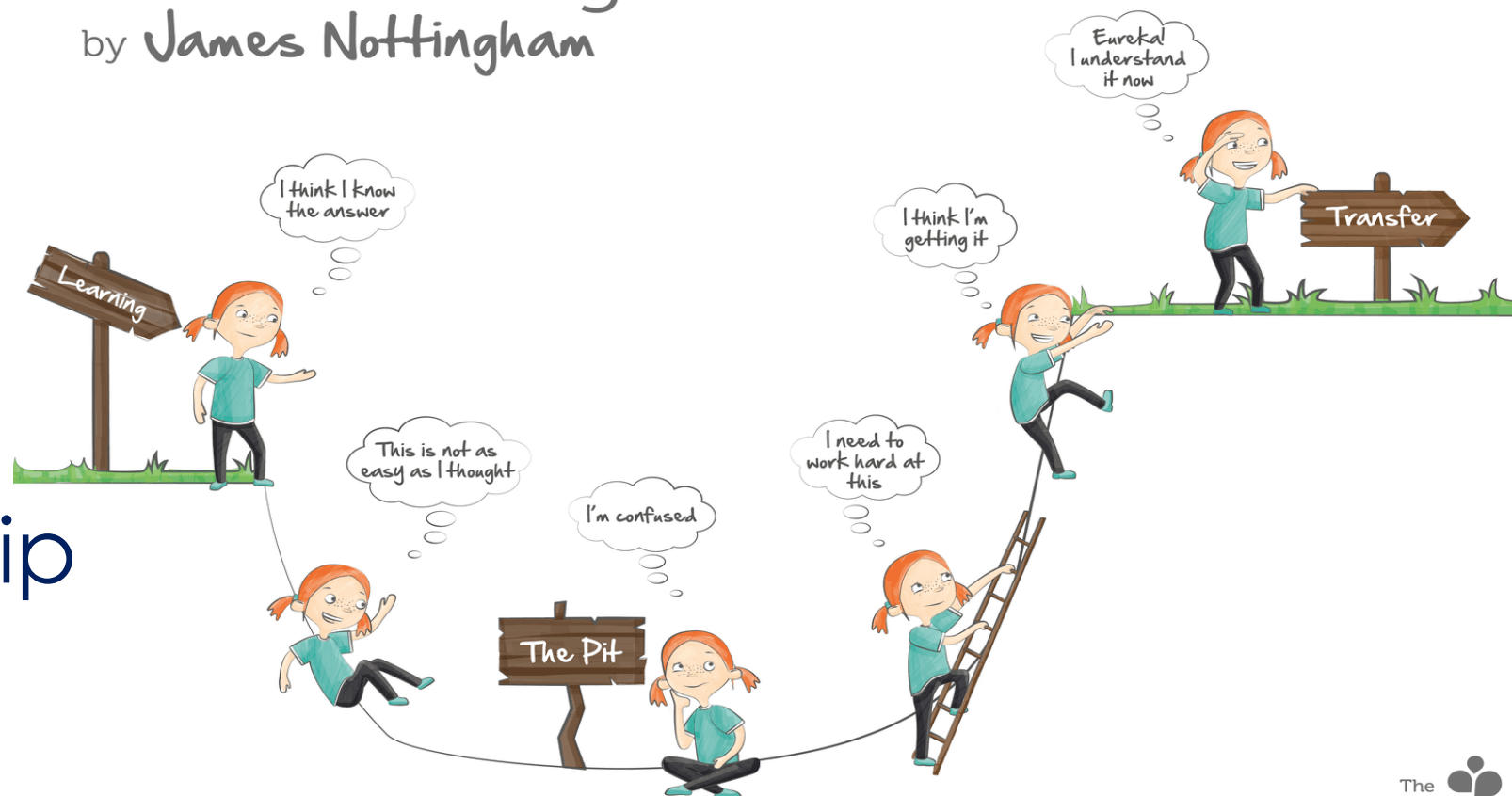


Student agency

Student voice

Parent Partnership

The Learning Pit by James Nottingham





Janine Finnie

Director of Sport



05

The importance of being physically active

- Compulsory framework allows healthy habit development
- Academic outcomes
- Emotional, physical and mental wellbeing
- Social benefits, connecting to community and the value of all students in our program
- But my child doesn't like 'sport'..... supporting healthy habits



Opportunities for every child

- PSA proud membership
- ACC coeducational competition
- PNA, Rowing WA, Hockey WA best available competition
- Balancing pattern of sport across the week – Friday afternoons
- Interschool Equestrian program





Matt Weston

Head of Boarding



06

What makes a boarding school different?

- There are over 800 schools in WA and only 22 are Boarding Schools, 17 of which are in the Perth metro area.
- Boarding Schools never close outside of mid-term and termly breaks.
- Boarders range in age from 11 to 18 and come from all areas of the state, country and globe.





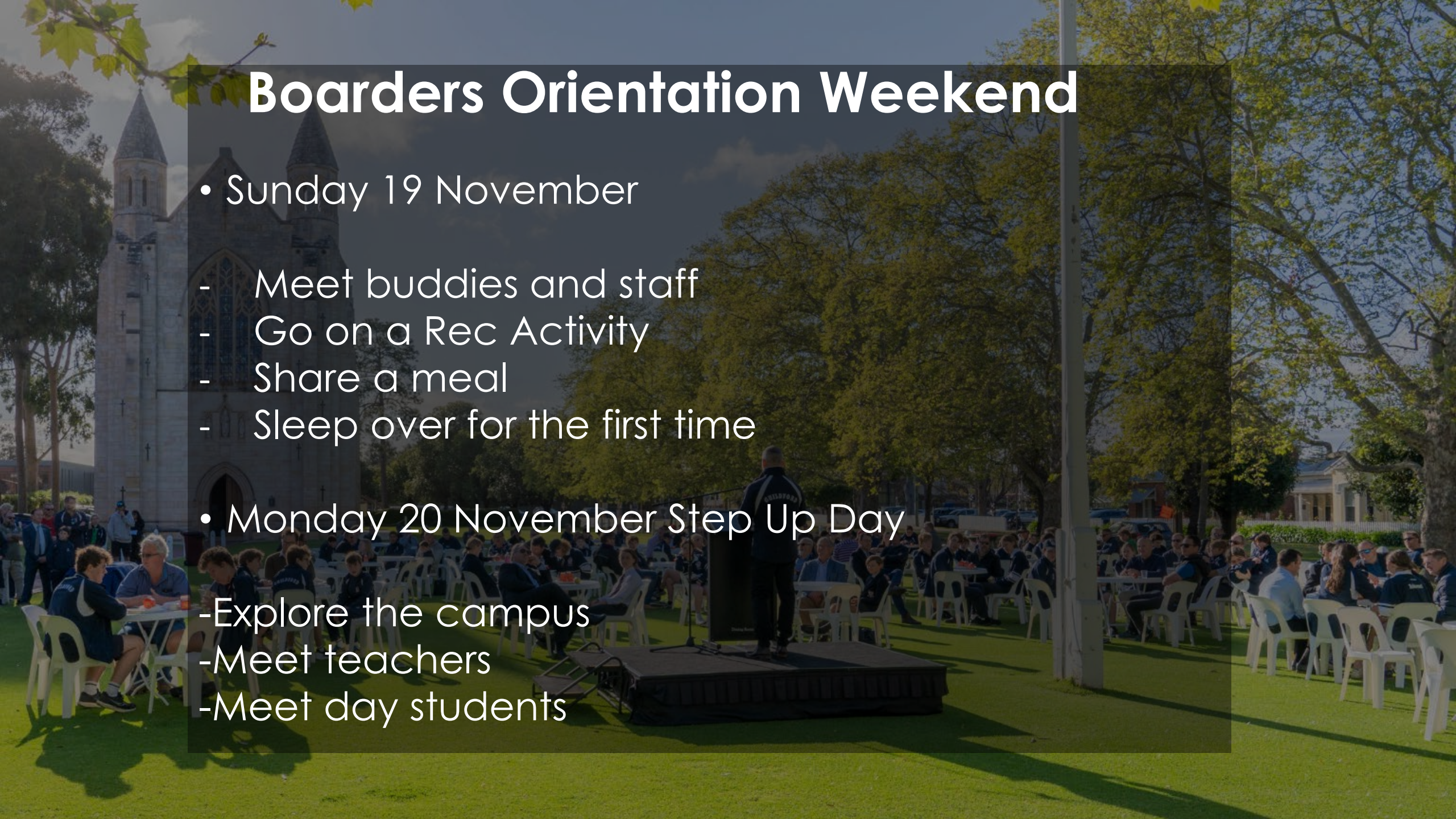
**What to expect if
your child is
coming to
board?**



- Excitedness, anxiousness, stress
- Bridging the gap academically
- Managing the campus

Boarders Orientation Weekend

- Sunday 19 November
 - Meet buddies and staff
 - Go on a Rec Activity
 - Share a meal
 - Sleep over for the first time
- Monday 20 November Step Up Day
 - Explore the campus
 - Meet teachers
 - Meet day students





Ways to connect day and boarding families

- Club Sport
- Being a Host
- Adopt-a-boarder weekend
 - Mid-term breaks
 - Holidays





Bruce Derby

Deputy Principal
Learning, Leadership &
Transformation



07



Year 7 is made up of courses that are studied by all students and those that they can select based on their interests and passions



Up to Year 8, all students need to study:

- Languages
- Digital Technologies
- Design Technologies
- Visual Arts
- Performing Arts

Within these areas, students can choose from a range of courses



Languages

French
Chinese

Design Technologies

Guildford Gourmet
Materials Technologies
Engineering



Visual Arts

Visual Art
Media

Performing Arts

Dance
Drama
Music



Discovery courses

Choose 1 each of the following:

- Language
- Design Tech course
- Visual Arts course
- Performing Arts course

The online selection link will be sent in the next week

A photograph of two students, a boy and a girl, in school uniforms sitting at a table. The boy is on the left, smiling and looking at the laptop. The girl is on the right, also smiling and looking at the laptop. They are both wearing dark blue blazers and ties. The laptop is open on the table, and there are some papers and a blue folder nearby. The background shows a large window with a view of the outside world.

Streaming

We take a cautious approach to streaming. We will be clustering students from the start of the year, and students may move as needed.

From Year 7-10, we stream our Maths, English, Science and HASS into STRIVE and Standard courses.

We also provide support for students who have greater need.

The Timetable

A typical week

This is a sample of Week A
of a two-week timetable.

	Monday	Tuesday	Wednesday	Thursday	Friday
1	HASS	English	Assembly	Science	Maths
2	Pastoral Care	RPE	English	Discovery	Science
3	HPE	Maths	HASS	Maths	English
4	Discovery	HASS	Maths	HPE	Sport
5	Science	LOTE	Discovery	LOTE	
6	English	Discovery	Science	HASS	

The Timetable

The School Day

Our school day ensures that both prime learning time is maximised and that the school day begins in a way that launches each student into their learning.

Monday - Thursday

Mentor/Chapel

8:25-8:50 (25 mins)

Period 1

8:50 – 9:50 (60 mins)

Period 2

9:50 – 10:50 (60 mins)

10:50 – 11:10 (20 mins)

Period 3

11:10 – 12:05 (55 mins)

Period 4

12:05 – 1:00 (55 mins)

1:00-1:40 (40 mins)

Period 5

1:40 – 2:35 (55 mins)

Period 6

2:35 – 3:30 (55 mins)

Friday

Mentor/Chapel

8:25-8:50 (25 mins)

Period 1

8:50 – 9:55 (65 mins)

Period 2

9:55 – 11:00 (65 mins)

11:00 – 11:20 (20 mins)

Period 3

11:20 – 12:20 (60 mins)

12:20-1:00 (40 mins)

**Sport
Co-Curricular Program**

1:00 – 3:30 (150 mins)

A photograph of four students in school uniforms in a library. Two boys and one girl are seated at a round white table with a laptop, while another student stands in the background near bookshelves. The image is partially obscured by a dark blue banner on the right.

Next Steps

Course selections: this will come out in the next week via email.

Confirmation of selections: this will come out in early Term 4.

Booklists: these will come out in early Term 4. The Discovery Course selection won't affect this.



Richie Longson

Head of Community
Engagement



08



https://www.ggs.wa.edu.au

Mildred Grammar School
FOUNDED 1898

(+61 8) 9377 9222 | GIVING | ALUMNI | BOOK A TOUR | CURRENT FAMILIES

ABOUT LEARNING OPPORTUNITIES OUR CAMPUS BOARDING ENROLMENT COMMUNITY

GO FORWARD

Discover >



[Absentee Information](#)

[Boarding App \(REACH\)](#)

[Booklists](#)

[Bring Your Own Device
\(BYOD\) Program](#)

[Calendar & term dates](#)

[Campus Maps](#)

[Clothing Shop](#)

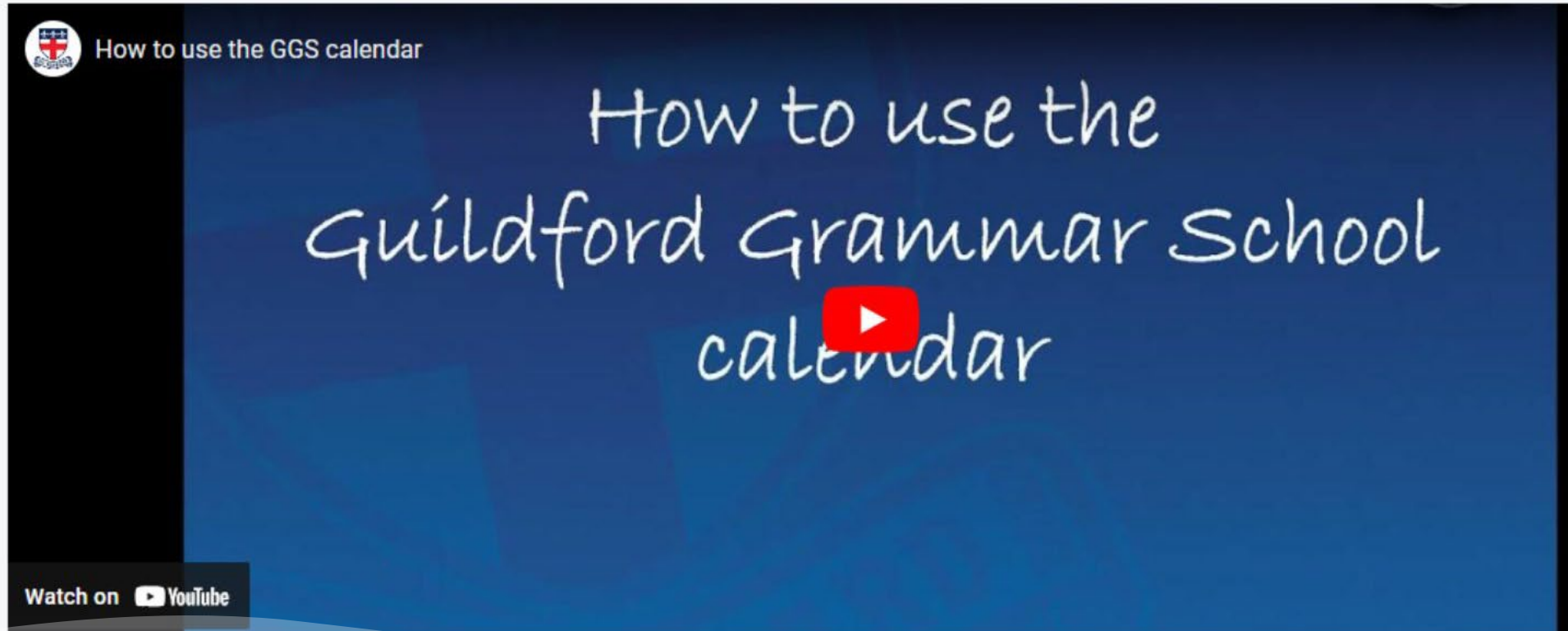
[Co-curricular website](#)

[Community Business
Directory](#)

Calendar & term dates

The online school calendar includes all term dates and major events throughout the School year, including co-curricular, community, in/excursions, C and sport carnivals. The calendar allows parents to filter events to suit their needs and preferences. It can be downloaded to your own calendar program for access.

Watch a brief video on using and syncing the School calendar.



[Go to calendar](#)

[Absentee Information](#)

[Boarding App \(REACH\)](#)

[Booklists](#)

[Bring Your Own Device
\(BYOD\) Program](#)

[Calendar & term dates](#)

[Campus Maps](#)

[Clothing Shop](#)

[Co-curricular website](#)

[Community Business
Directory](#)

Calendar & term dates

The online school calendar includes all term dates and major events throughout the School year, including co-curricular, community, in/excursions, C and sport carnivals. The calendar allows parents to filter events to suit their needs and preferences. It can be downloaded to your own calendar program for access.

Watch a brief video on using the School calendar.



[Go to calendar](#)



Get ready for school

Handbooks

Medical Centre

Online Forms

Parent Teacher
Interviews

SchoolTV

Seesaw

SEQTA Academic
Reporting

Sports Training &
Fixtures





Welcome aboard

